

Ampure GO™ Gen 2

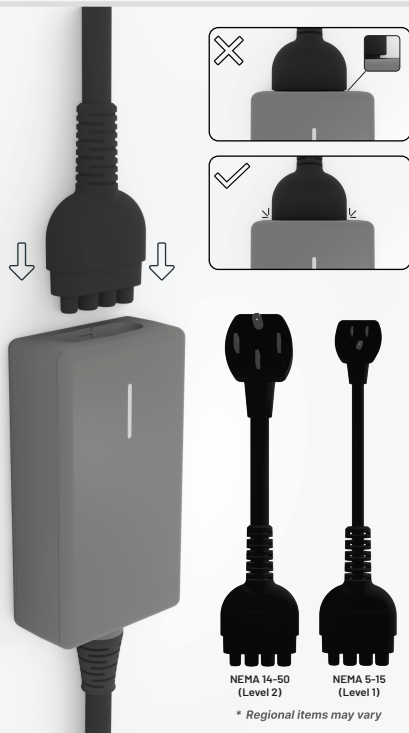
Portable Level 2 EV Cordset

QuickStart Guide

Ampure
1333 S. Mayflower Ave
Monrovia, CA 91016 USA

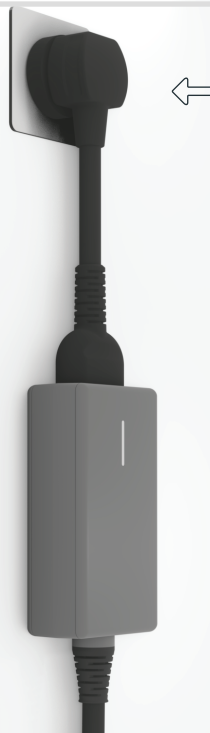


- 1** Connect grid cord for desired charging level. Ensure grid cord is fully seated before continuing.

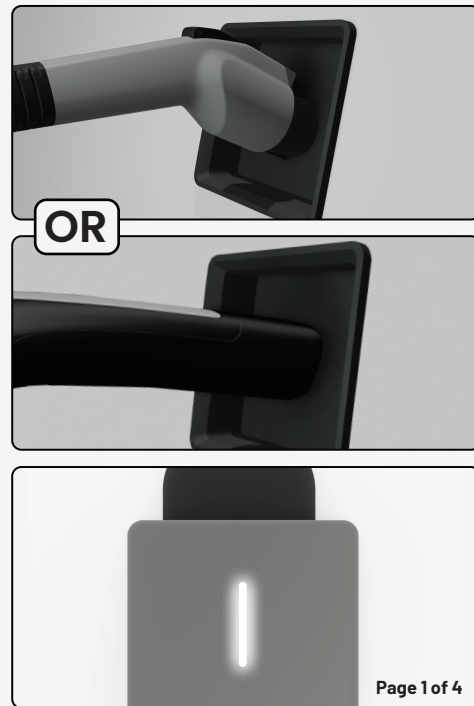


* Regional items may vary

- 2** Plug grid cord into electrical outlet.



- 3** Connect coupler to vehicle charge port. Cordset will illuminate and charge will begin.



IMPORTANT SAFETY INSTRUCTIONS, SAVE THESE INSTRUCTIONS

WARNING:

When using electric products, basic precautions should always be followed, including the information listed on the following pages. This quick start guide contains important instructions for the Ampure Go Gen 2 Portable Charger that should be followed during installation, operation and maintenance of the charger.

SYMBOL USAGE

DANGER



- Indicates information about safety practices which, if not followed, may result in serious injury or death.
- Risk of electric high or hazardous voltage – Parts inside this product are a risk of high or hazardous voltage to persons.

WARNING



- Indicates information about safety practices which, if not followed, could result in personal injury or are necessary to prevent thermal event or equipment overheating.

CAUTION



- Indicates information about operating instructions which, if not followed, may result in damage to the charger.



- Do not operate the Ampure Go on an ungrounded power grid (e.g. IT networks). Only operate the Ampure Go on grounded power grids.



- Operating the charger at altitudes higher than 13,123 ft (4,000 m) above sea level is not recommended.

NOTE



- Indicates helpful information for installation or usage, but does not contain personnel or equipment safety-related information.

INSTRUCTIONS PERTAINING TO A RISK OF FIRE OR ELECTRIC SHOCK

ABOUT YOUR AMPURE GO GEN 2 MOBILE CHARGER

The Ampure Go Gen 2 Mobile Charger is an easy-to-use, compact portable power supply for your electric vehicle. The charger supplies and manages AC power to your electric vehicle and is compatible with a variety of battery electric vehicles and plug-in hybrids. The charger operates from a 120-240 VAC (Single Phase or Split Phase) 50-60 Hz power source.

Key Features include:

- Compact-sized portable power supply, compatible with a variety of battery electric vehicles
- Easy to use – simply plug it in and begin charging.
- Overheating, overvoltage and overcurrent protection
- Quick-read status indicators
- Multiple grid cords are available
- UL certified according to established regulatory bodies
- RoHS and REACH Compliant

WARNING



This product must be grounded. If it should malfunction or break down, grounding provides a path of least resistance for electric current to reduce the risk of electric high or hazardous voltage. This product is equipped with a grid cord having an equipment grounding conductor and a grounding plug. The plug must be inserted into an appropriate outlet that is properly installed and grounded in accordance with all local codes and ordinances.

Improper connection of the electrical outlet grounding conductor might result in a risk of electric high or hazardous voltage. Check with a qualified electrician if you are uncertain whether or not the electrical outlet is properly grounded. Do not modify the plug provided with the product if it does not fit in the outlet. Have a proper outlet installed by a qualified electrician.

625.54 Ground-Fault Circuit-Interrupter Protection for Personnel

All single-phase receptacles installed for electric vehicle charging that are rated at 240 volts or less to ground or less and 50 amperes or less should have a ground-fault circuit-interrupter protection.

625.56 Receptacle Enclosures

All receptacles installed in a location with the potential for becoming wet should have a weather-proof enclosure with the attachment plug cap inserted or removed.

DO NOT DROP the control box or coupler. Do NOT use if stored outside the temperature range specified.

WARNING



If the coupler cable becomes separated from the control box or the charger coupler, DO NOT ATTEMPT TO REPAIR THE CABLE YOURSELF.

If you purchased your Ampure Go at an auto dealership, please contact the dealership. Otherwise, please contact Ampure Customer Support (see page 1).

When using your Ampure Go, basic precautions should always be followed, including the following:

- Read all warnings and all instructions in this guide before using this product.
- Never use the charger with an extension cord.
- Do not plug the charger adapter into worn or severely degraded power outlets.
- High or hazardous voltage hazard – be sure the plug is fully inserted into the wall outlet so there are no exposed blade surfaces.
- Children should be supervised when in the vicinity of the charger while plugged in.
- Do not put your fingers into the electric charger coupler.
- Only connect the charger to a circuit with 50 amps maximum branch circuit overcurrent protection in accordance with NEC and local electrical code.

WARNING – Do not plug the charger into an electrical outlet submerged in water or covered in snow.

WARNING – Do not use the charger if the charger is submerged in water or snow.

WARNING – Do not use the charger during a severe rain, snow or an electrical storm.

WARNING – Avoid moisture, water, snow and foreign objects at all times.

WARNING – If the charger has been immersed in water or subjected to severe snow, allow sufficient drying period before reuse (24 hours or more).

CAUTION



This product will not charge and will give a fault indication if ground is not present. Do not replace the plug with retrofit (aftermarket) component – there are critical safety devices in the plug, and the device will not operate if it is replaced.

Do not modify. This charger contains no user modifiable / repairable parts, even for experts. Keep the charger/charge cable inside when not in use (out of the elements / inside the garage is acceptable). Do not use any third party grid cords, as this can lead to potential failure. Use only plugs offered from Ampure with an approved outlet.

CAUTION: Do not connect or disconnect the grid cord from the control box while it is in use or charging, i.e., the grid cord plug is connected to the power outlet or the vehicle connector coupler is engaged to a vehicle inlet.

CAUTION

CAUTION: Do not operate the charger in a temperature outside its operation range of -22°F to +122°F (-30°C to +50°C).

CAUTION: Store the charger in a clean dry place in a temperature range between of -22°F to +185°F (-30°C to 85°C).

CAUTION: To disconnect the coupler from the vehicle charge port, press the release button on the coupler, then pull the coupler away from the vehicle.

CAUTION: Before plugging the coupler into the vehicle's charging inlet, confirm the control box is firmly secured to the wall using two #10 screws, and the coupler cable has been placed out of the way in a safe location to prevent tripping hazards.

SPECIFICATIONS

CHARGER MODEL	SAE (NORTH AMERICA)
Voltage:	120-240 VAC
Maximum current:	32 amps max continuous
Frequency:	60 Hz
Power consumption at idle:	< 2.5 watts
Power consumption during charging:	< 6.5 watts
Cable length:	Approximately 20 ft (6.1 m)
Weight:	8.8 lbs (4 kg)
Operating temperature:	-22°F to +122°F (-30°C to +50°C)
Storage temperature:	-40°F to +185°F (-40°C to +85°C)
Maximum CCID environmental rating:	IP67
Ventilation:	Not required

Specifications are subject to change without notice.

CARE INSTRUCTIONS

Do not use hard cleaners or solvents as this may damage your Ampure Go charger. Do not kink or place undue stress on the charger cables. If the control box is exposed to direct sunlight, it may become too hot to the touch – we recommend keeping the control box out of direct sunlight.

MOVING, TRANSPORTING, AND STORAGE INSTRUCTIONS

- When transporting the charger, handle it with care. Do not subject it to strong force or impact, also do not pull, twist, tangle, drag, or step on the charger, coupler cable or power cable or any other components to prevent damaging it or any of its components.
 - When moving the charger, be careful not to lift nor carry the assembly by the coupler cable, nor the power cable, so that the control box is hanging from the cables.
 - When transporting or carrying the charger, carefully wind up the power cable and coupler cable, and carry the entire assembly with the control box. If possible, neatly place all the charger components in the carry bag that is provided with the charger.
 - When storing the charger, be sure to store it in a clean, dry location off the ground and away from weather elements.
- Be sure that the charger temperature is within its storage temperature limits when moving, transporting, or storing it.