

PosiLink

Cloud-Based Back Office Data Management



Fleet Data Is **Actionable**

- Email alerts and exception notifications provide instant information on the health and treatment of the fleet so issues can be corrected before they cause productivity losses. Alerts can be selected by the user to control information volume and flow.
- Historical and predictive reports provide concrete information for training your operators, optimizing the distribution of vehicles throughout your facility, and planning for future orders or expansions.
- Real time views of your fleet allow you to immediately identify compliance problems, explore causes, and provide on-the-spot guidance to your operators.

Fleet Data Is **Automatic**

- Charger and battery data are automatically downloaded from the charger and uploaded to the PosiLink for processing. No manual download procedures are required.
- Key insights via dashboards. View real-time insights about fleet performance, scheduled weekly, monthly or annual reports on fleet activities.

Fleet Data Is **Accessible**

- Web-based system architecture allows access to operations information from any place in the world.
- Simple, intuitive controls allow the user to rapidly navigate to the information they need.
- Optional third-party access to fleet data can dramatically improve service response time. Battery and charger service personnel can review data in order to identify issues, remotely diagnose, and provide fast solutions, minimizing downtime and maximizing productivity.

Key Features:

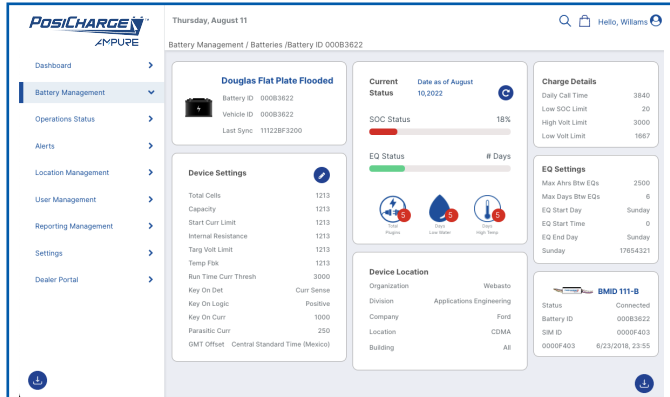
- Access comprehensive reporting capabilities to gain deep insights into your fleet's performance
- Easily view and download fleet information from the internet, streamlining your data management process
- Intuitive user interface that simplifies navigation and data analysis
- Receive weekly exception reports and lifetime battery historical reports for informed decision-making
- Stay informed with real-time alerts, enabling early detection and proactive issue resolution
- Identify and prevent long-term battery damage before it becomes irreversible
- Monitor critical health events, including power loss, low battery state of charge (SOC), low battery voltage, and missed equalizations
- Review daily usage and plug-in data based on selected date ranges to optimize operational efficiency
- Generate concise one-page battery reports with the option to schedule emails or download directly from the portal
- Access preventative maintenance and warranty information to ensure efficient asset management

Full suite of battery and charger data analysis

PosiCharge PosiLink is a comprehensive fleet management tool for charge operations. Built on a unique system architecture that links all chargers into a single network, PosiLink automatically captures and analyzes operational data, and then presents actionable fleet usage and warranty compliance reports, thereby empowering operations professionals to manage their fleet effortlessly.

Manage Battery Details

Add, view, and modify battery details, from state of charge to fault alerts



Accurate for maximizing fleet performance

Detailed daily tracking reports, weekly exception reports and lifetime statistical analysis provide easy visibility to battery health across the entire fleet, helping identify potential issues before they become larger problems and simplifying warranty compliance.

Monitor Battery Temperature

Review battery temperature in detail for selected date range



PosiCharge is a product line of
Ampure

1333 S. Mayflower Avenue,
Suite 100
Monrovia, CA 91016
USA

+1 (888) 767-4242

posicharge.com